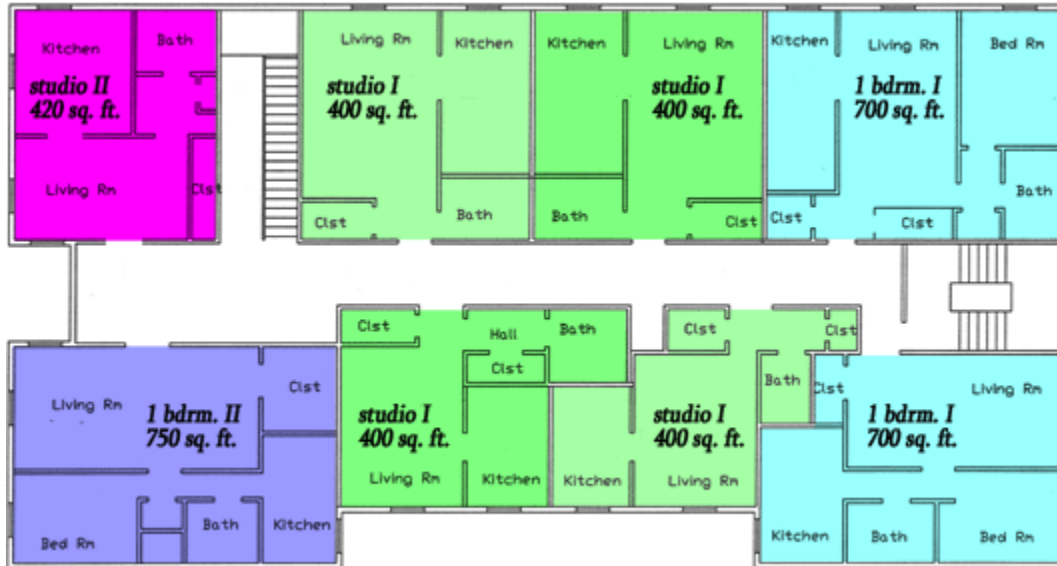


# THE MORELAND MANOR

215 N. ELIZABETH ST.

PH: 419-516-4486



\*typical floor layout

STUDIO I APARTMENTS	STUDIO II APARTMENTS
<p>400 Square Foot studio style apartments features:</p> <ul style="list-style-type: none"> <li>• "Murphy" pull-down bed</li> <li>• refrigerator</li> <li>• stove</li> <li>• individually controlled heat &amp; air conditioning</li> </ul> <p>\$525 monthly rent includes/covers:</p> <ul style="list-style-type: none"> <li>• water</li> <li>• sewer</li> <li>• electric (400 KwH, each additional KwH \$0.15)</li> <li>• trash collection</li> <li>• cable television</li> <li>• telephone service (local, LD, Caller ID, VM...)</li> <li>• security / 1 key fob (lost/replacement fob \$25.00)</li> <li>• high-speed internet access</li> </ul> <p>+\$50/monthly per additional tenant</p> <p>Building Apartment numbers:</p> <ul style="list-style-type: none"> <li>• #14, #15, #16, #17 (first floor)</li> <li>• #23, #24, #25, #26 (second floor)</li> <li>• #33, #34, #35, #36 (third floor)</li> </ul>	<p>420 Square Foot studio style apartments features:</p> <ul style="list-style-type: none"> <li>• "Murphy" pull-down bed</li> <li>• refrigerator</li> <li>• stove</li> <li>• individually controlled heat &amp; air conditioning</li> </ul> <p>\$550 monthly rent includes/covers:</p> <ul style="list-style-type: none"> <li>• water</li> <li>• sewer</li> <li>• electric (400 KwH, each additional KwH \$0.15)</li> <li>• trash collection</li> <li>• cable television</li> <li>• telephone service (local, LD, Caller ID, VM...)</li> <li>• security / 1 key fob (lost/replacement fob \$25.00)</li> <li>• high-speed internet access</li> </ul> <p>+\$50/monthly per additional tenant</p> <p>Building Apartment numbers:</p> <ul style="list-style-type: none"> <li>• #21 (second floor)</li> <li>• #31 (third floor)</li> </ul>

1 BEDROOM I APARTMENTS	1 BEDROOM II APARTMENTS
<p>600+Square Foot one bedroom apartments features:</p> <ul style="list-style-type: none"> <li>• refrigerator</li> <li>• stove</li> <li>• individually controlled heat &amp; air conditioning</li> </ul> <p>\$625 monthly rent includes/covers:</p> <ul style="list-style-type: none"> <li>• water</li> <li>• sewer</li> <li>• electric (500 KwH, each additional KwH \$0.15)</li> <li>• trash collection</li> <li>• cable television</li> <li>• telephone service (local, LD, Caller ID, VM...)</li> <li>• security / 1 key fob (lost/replacement fob \$25.00)</li> <li>• high-speed internet access</li> </ul> <p>+\$50/monthly per additional tenant</p> <p>Building Apartment numbers:</p> <ul style="list-style-type: none"> <li>• #11, #18, #19 (first floor)</li> <li>• #27, #28 (second floor)</li> <li>• #37, #38 (third floor)</li> </ul>	<p>650+Square Foot one bedroom apartments features:</p> <ul style="list-style-type: none"> <li>• refrigerator</li> <li>• stove</li> <li>• individually controlled heat &amp; air conditioning</li> </ul> <p>\$650 monthly rent includes/covers:</p> <ul style="list-style-type: none"> <li>• water</li> <li>• sewer</li> <li>• electric (500 KwH, each additional KwH \$0.15)</li> <li>• trash collection</li> <li>• cable television</li> <li>• telephone service (local, LD, Caller ID, VM...)</li> <li>• security / 1 key fob (lost/replacement fob \$25.00)</li> <li>• high-speed internet access</li> </ul> <p>+\$50/monthly per additional tenant</p> <p>Building Apartment numbers:</p> <ul style="list-style-type: none"> <li>• #12 (first floor)</li> <li>• #22 (second floor)</li> <li>• #32 (third floor)</li> </ul>

**\*Short term lease, add \$100.00 monthly.**  
**\*\* \$100.00 additional per month for fully furnished apartment.**

**For More Information, Contact Us At:**

O'CONNOR INVESTMENT PROPERTIES  
215 N. ELIZABETH ST.  
LIMA, OH. 45801  
PHONE: 419-516-4486